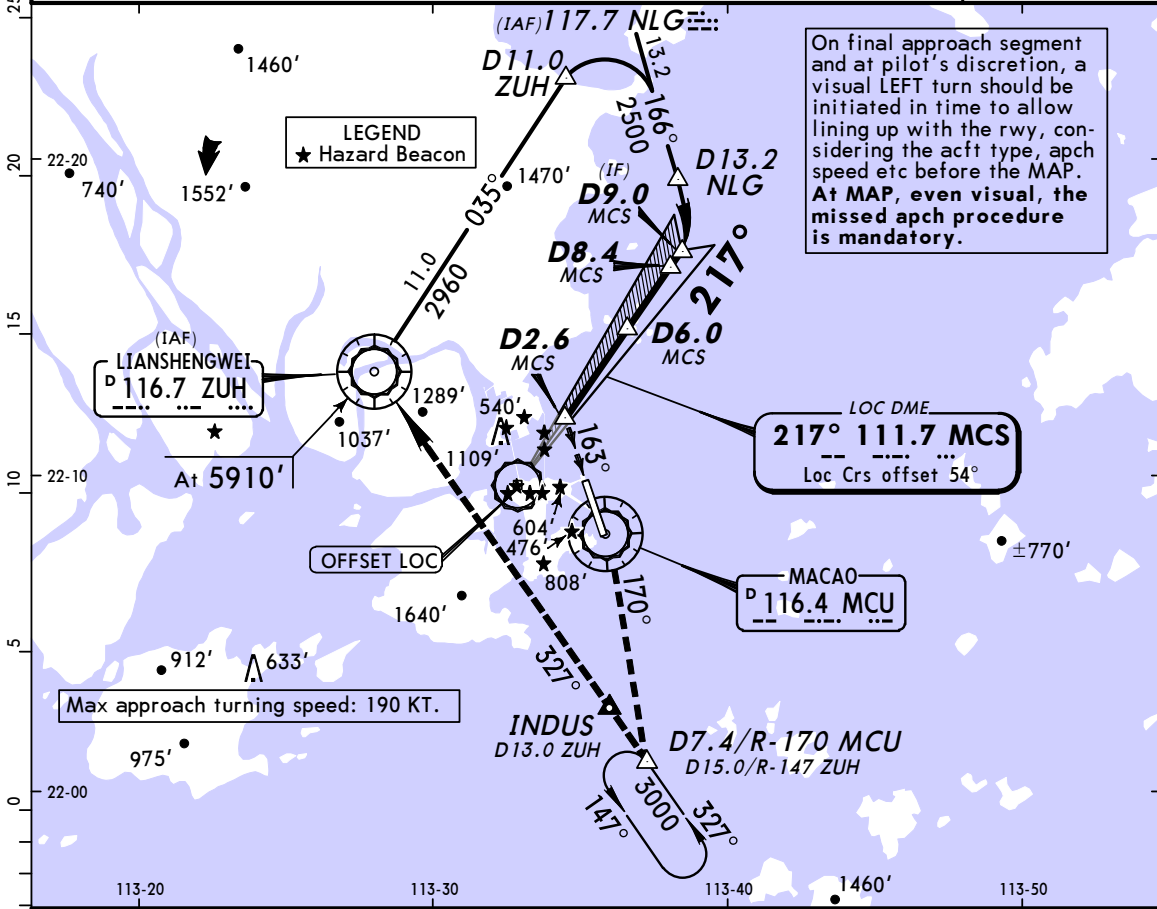
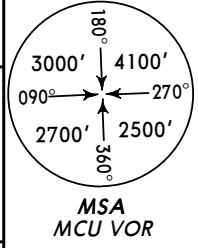


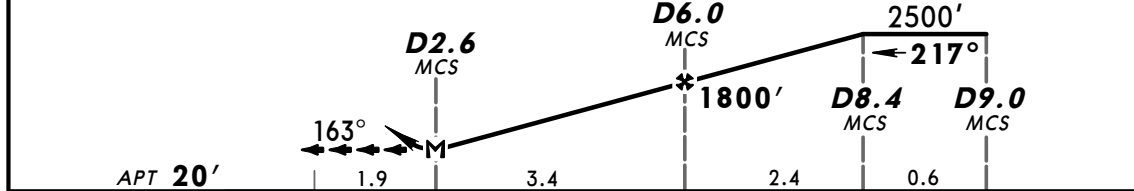
ATIS 126.4	*HONG KONG Radar 126.3	*ZHUHAI Approach 120.35	MACAO Tower 118.0	Ground 121.72 121.97
LOC MCS 111.7	Final Apch Crs 217°	Minimum Alt D6.0 MCS 1800' (1780')	MDA(H) 720' (700')	Apt Elev 20'

**MISSED APCH:** Climb on R-343 inbound MCU VOR to 4000'. At MCU VOR track on R-170 to D7.4 MCU and expect Radar vectoring from Hong Kong Radar to cross INDUS at 5910' to join R-147 inbound ZUH VOR and cross ZUH VOR at 5910', or as directed.  
When required, join holding at D7.4/R-170 MCU or proceed as directed.  
MAX 185 KT during turns.

Alt Set: hPa    Apt Elev: 1 hPa    Trans level: By ATC    Trans alt: 9000'



MCS DME	3.0	4.0	5.0	6.0
ALTITUDE	850'	1170'	1490'	1800'



Gnd speed-Kts	70	90	100	120	140	160	HIALS	185 KT	4000'	MCU	MCU
Descent Gradient 5.2%	369	474	527	632	737	843	PAPI	MAX	↑	116.4	116.4
MAP at D2.6 MCS								LT		on R-343	

LANDING RWY 16				CIRCLE-TO-LAND			
MDA(H) 720' (700')							
ALS out							

A	3600m	A	NOT APPLICABLE
B		B	
C		C	
D		D	